

cytosomes™

Cytosomes are clinical-grade extracellular vesicles (EVs) derived from amniotic fluid. Cytosomes are small, membrane bound EVs released by the developing fetus, placenta, and the mother into amniotic fluid.

Cytosomes are the great communicators. When cells signal in a paracrine fashion, they use EVs to package and transmit the messages.

Not all amniotic fluid is the same. The difference lies in the source material, quality of the processing technique, particle size, concentration, and protein and ribonucleic acid (RNA) concentration.

why cytosomes™

Product Codes

REX-0100	1.0ML
REX-0200	2.0ML
REX-0500	5.0ML

Cytosomes are produced on site by highly trained scientists at a cGMP compliant laboratory in ISO 7 cleanrooms.

Each 1cc of Cytosomes contains an average of 250 billion (+/-100 billion) EVs.

Cytosomes particle size is consistently between 50 - 150 nm.

Sterility is validated by a qualified and independent CLIA certified lab.

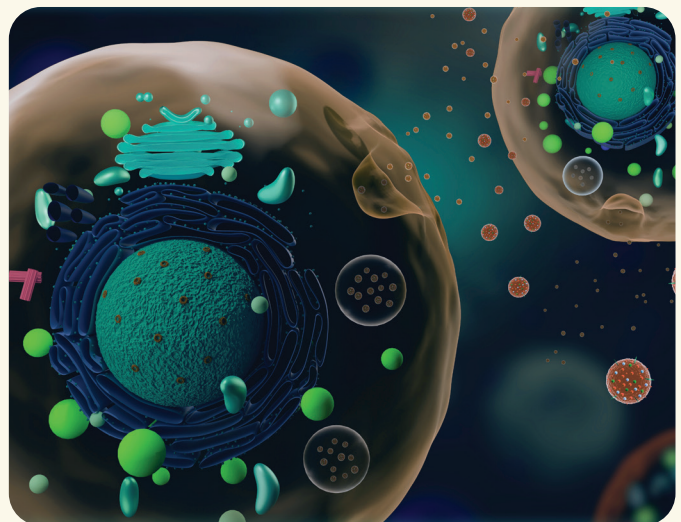
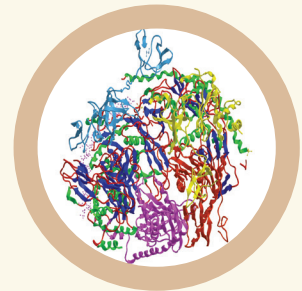
Disclaimer: Our Human Cell, Purified Amniotic Fluid, and Tissue products are not FDA approved or licensed for the prevention, treatment, diagnosis, mitigation and/or cure of any disease or condition, including COVID-19. All statements and opinions provided are for educational and informational purposes only and we do not diagnose or give medical nor legal advice. Individuals interested in natural biologics therapy are urged to review all pertinent information and do their own research before choosing to participate in treatments utilizing natural biologics products.



New Life[®]
MEDICAL SERVICES

Quality Assurance

Cytosomes are procured from consenting, healthy, carefully screened, and tested mothers at the time of cesarean section. Recovery is performed by tissue banks accredited by the American Association of Tissue Banks (AATB) following the stringent guidelines enforced by the Food and Drug Administration (FDA) and the Center for Disease Control (CDC).



New Life[®]
MEDICAL SERVICES

(813) 461-8100
www.newliferegen.com